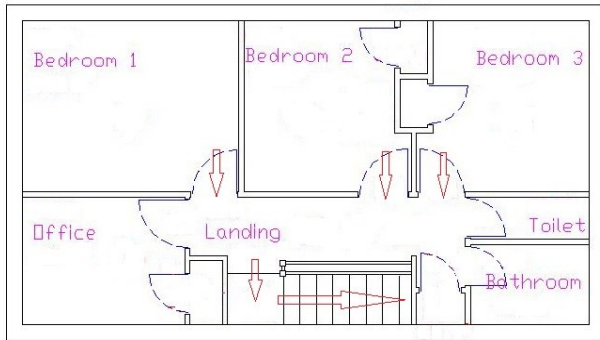
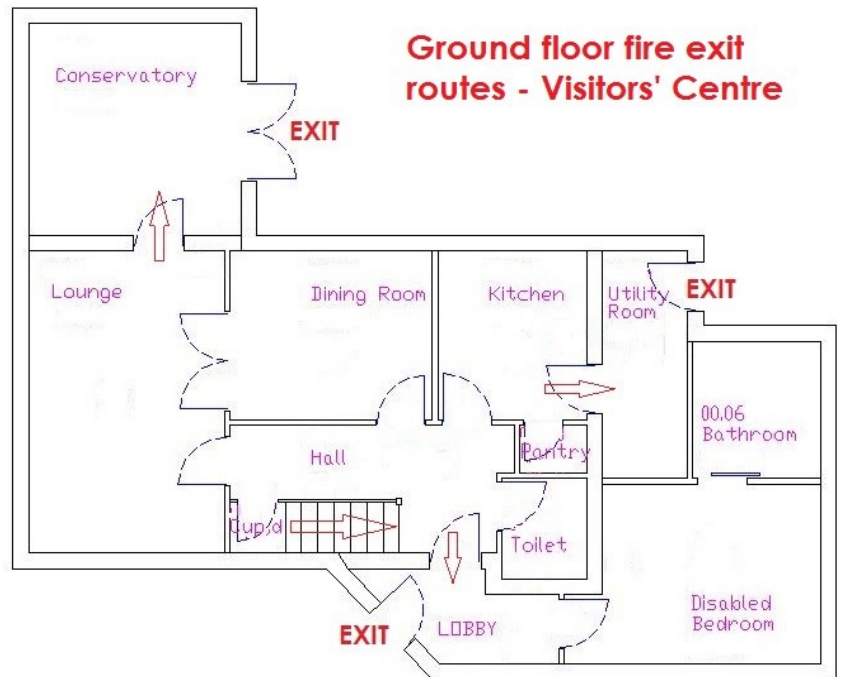


Visitors' Centre – Fire Action Plan

First floor fire exit route - Visitors' Centre



Ground floor fire exit routes - Visitors' Centre



FIRE ACTION

If you discover or suspect a fire



1 Sound the alarm by the nearest fire alarm call point.



2 Hospital control staff will alert the emergency services.



3 Leave the building by the nearest available exit.



4 Report to person in charge of assembly point – The car park opposite the Visitor Centre's main entrance.



5 DO NOT stop to collect personal belongings.